

AN ISO 9001:2015 CERTIFIED COMPANY

Fitwell™

PIPING SYSTEMS

The Complete **Plumbing** Solution
Under One Roof



cPVC Pipes & Fittings | uPVC Pipes & Fittings | SWR Pipes & Fittings
Agriculture Pipes & Fittings | Service Saddle | MDPE Fittings | FRP Manhole Cover | PVC Faucet

PRICE LIST
w.e.f. 1st Jul. 2024



ABOUT Fitwell™ POLYTECHNIK Pvt. Ltd.

We are a group of 3 manufacturing company. The group slowly but steadily diversified and started the manufacturing of cPVC, uPVC, SWR, Agri Pipe & Fittings, CP Fittings, Brass Fittings & C.I, M.I, G.I Pipe Fittings, Forged Pipe Fittings. established its products successfully both in Indian & foreign markets.

Our group of company was established in 1998. We are one of the leading manufacturers of cPVC, uPVC, SWR, Agri Pipe & Fittings, CP Fittings, Brass Fittings & C.I, M.I, G.I Pipe Fittings, Brass Forged Pipe Fittings. The factory has the necessary facilities for casting & Injection molding according to international standard. Threading as per standard and up to date inspection of testing chemical and physical properties is undertaken. We are having a team of highly qualified and experienced engineers for quality maintenance & consistent research development efforts are made through rigid quality control tests.

Fitwell™ Brand ISI pipe Fittings enjoy a good reputation for its quality and durability all over India & Abroad. It has the unique distinction of being sought after in Government departments, Municipal Corporations and oil & gas Plants. Our factory is equipped with the most up to date and sophisticated instruments for chemical and physical testing. The quality control is rigidly enforced through out the production process to ensure that the finished products are of the highest possible quality.

Fitwell™ Brand ISI Pipe Fittings are dependable beyond doubt. These are also exported to various countries, On account of consistent Quality **Fitwell™** Brand ISI marked Pipe Fittings, Enjoy a great reputation in International Market With British International Organisation, Indian and American Standards.

Beautiful Design, Reliable Performance, Affordable Price.
With **Fitwell™** You Get The Whole Package for Piping System.

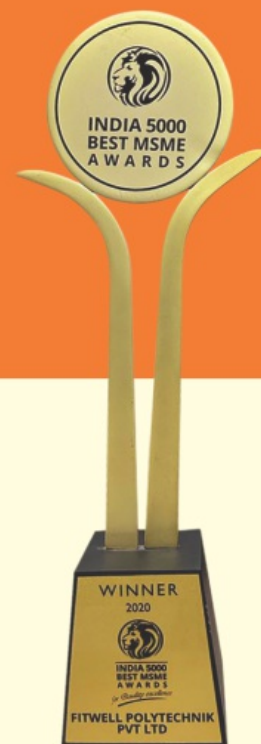
AN ISO 9001:2015 COMPANY



WINNER-2020

INDIA 5000 BEST MSME AWARDS

FITWELL POLYTECHNIK PVT. LTD.



The Complete **Plumbing** solution

UPVC PIPES & FITTINGS

FOR COLD WATER

Application :

- Cold Water Plumbing in Building.
- Swimming Pools.
- Corrosive Fluid Transportation.
- Water Distribution Mains.
- Industrial Process Lines.

One Stop for multiple plumbing solution under one roof



PRODUCT FEATURES:



Light Weight



Non Toxic



UV Resistant



Effective Cost



Lead Free



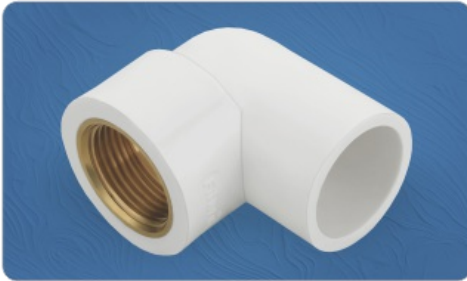
Easy to Install



Cold Water Suit.



Lead Free uPVC Fittings in SCH-80 as per ASTM D2467



BRASS ELBOW

Size (Inch)	Size mm	Std.Pkd.	Qty./Box	M.R.P.
1/2"	15	50	350	
3/4"	20	25	225	
1"	25	20	120	
3/4"x1/2"	20x15	40	280	
1"x1/2"	25x15	25	175	
1"x3/4"	25x20	20	160	



BRASS F.T.A.

Size (Inch)	Size mm	Std.Pkd.	Qty./Box	M.R.P.
1/2"	15	50	500	
3/4"	20	50	300	
1"	25	25	125	
1.1/4"	32	20	100	
1.1/2"	40	12	48	
2"	50	9	45	
2.1/2"	65	-	9	
3"	80	-	5	
3/4"x1/2"	20x15	50	400	
1"x1/2"	25x15	40	280	
1"x3/4"	25x20	30	270	



BRASS M.T.A.

Size (Inch)	Size mm	Std.Pkd.	Qty./Box	M.R.P.
1/2"	15	50	400	
3/4"	20	25	275	
1"	25	25	125	
1.1/4"	32	20	100	
1.1/2"	40	12	48	
2"	50	9	36	
2.1/2"	65	-	8	
3"	80	-	5	
3/4"x1/2"	20x15	50	350	
1"x1/2"	25x15	30	270	
1"x3/4"	25x20	25	225	



BRASS TEE

Size (Inch)	Size mm	Std.Pkd.	Qty./Box	M.R.P.
1/2"	15	35	245	
3/4"	20	25	175	
1"	25	15	105	
3/4"x1/2"	20x15	25	200	
1"x1/2"	25x15	20	140	
1"x3/4"	25x20	15	105	



ELBOW

Size (Inch)	Size mm	Std.Pkd.	Qty./Box	M.R.P.
1/2"	15	60	480	
3/4"	20	40	280	
1"	25	25	150	
1.1/4"	32	10	90	
1.1/2"	40	10	60	
2"	50	8	40	
2.1/2"	65	-	44	
3"	80	-	24	



EQUAL TEE

Size (Inch)	Size mm	Std.Pkd.	Qty./Box	M.R.P.
1/2"	15	50	300	
3/4"	20	25	175	
1"	25	15	105	
1.1/4"	32	10	60	
1.1/2"	40	6	48	
2"	50	4	32	
2.1/2"	65	-	30	
3"	80	-	19	



COUPLER

Size (Inch)	Size mm	Std.Pkd.	Qty./Box	M.R.P.
1/2"	15	100	600	
3/4"	20	60	420	
1"	25	30	210	
1.1/4"	32	20	120	
1.1/2"	40	15	105	
2"	50	9	63	
2.1/2"	65	-	72	
3"	80	-	48	



M.T.A.

Size (Inch)	Size mm	Std.Pkd.	Qty./Box	M.R.P.
1/2"	15	100	900	
3/4"	20	50	500	
1"	25	50	300	
1.1/4"	32	20	180	
1.1/2"	40	24	144	
2"	50	18	90	
2.1/2"	65	-	48	
3"	80	-	48	



F.T.A.

Size (Inch)	Size mm	Std.Pkd.	Qty./Box	M.R.P.
1/2"	15	100	700	
3/4"	20	75	450	
1"	25	40	240	
1.1/4"	32	20	160	
1.1/2"	40	20	120	
2"	50	15	75	
2.1/2"	65	-	48	
3"	80	-	48	



Lead Free uPVC Fittings in SCH-80 as per ASTM D2467



UNION

Size (Inch)	Size mm	Std.Pkd.	Qty./Box	M.R.P.
1/2"	15	50	300	
3/4"	20	25	175	
1"	25	15	120	
1.1/4"	32	10	70	
1.1/2"	40	6	54	
2"	50	8	32	
2.1/2"	65	-	36	
3"	80	-	25	



END CAP

Size (Inch)	Size mm	Std.Pkd.	Qty./Box	M.R.P.
1/2"	15	50	1000	
3/4"	20	100	600	
1"	25	50	400	
1.1/4"	32	40	280	
1.1/2"	40	20	160	
2"	50	15	120	
2.1/2"	65	-	45	
3"	80	-	40	



ELBOW 45°

Size (Inch)	Size mm	Std.Pkd.	Qty./Box	M.R.P.
1/2"	15	60	540	
3/4"	20	40	280	
1"	25	25	175	
1.1/4"	32	15	105	
1.1/2"	40	15	90	
2"	50	10	50	



TANK CONT.

Size (Inch)	Size mm	Std.Pkd.	Qty./Box	M.R.P.
1/2"	15	30	360	
3/4"	20	40	280	
1"	25	25	150	
1.1/4"	32	10	90	
1.1/2"	40	8	72	
2"	50	6	42	
2.1/2"	65	5	-	
3"	80	5	-	



PIPE TANK NIPPLE

Size (Inch)	Size mm	Std.Pkd.	Qty./Box	M.R.P.
1/2"	15	30	240	
3/4"	20	25	175	
1"	25	20	120	
1.1/4"	32	10	80	
1.1/2"	40	8	64	
2"	50	6	42	



SOCKET TANK NIPPLE

Size (Inch)	Size mm	Std.Pkd.	Qty./Box	M.R.P.
1/2"	15	50	400	
3/4"	20	40	240	
1"	25	25	150	
1.1/4"	32	20	120	
1.1/2"	40	20	100	
2"	50	10	50	
2.1/2"	65	5	-	
3"	80	5	-	



STEP OVER BEND

Size (Inch)	Size mm	Std.Pkd.	Qty./Box	M.R.P.
1/2"	15	20	180	
3/4"	20	15	120	
1"	25	10	50	
1.1/4"	32	6	36	
1.1/2"	40	5	30	
2"	50	4	8	



LONG BEND

Size (Inch)	Size mm	Std.Pkd.	Qty./Box	M.R.P.
1/2"	15	20	180	
3/4"	20	15	120	
1"	25	10	50	
1.1/4"	32	6	36	
1.1/2"	40	5	30	
2"	50	4	8	



END PLUG

Size (Inch)	Size mm	Std.Pkd.	Qty./Box	M.R.P.
1/2"	15	100	800	
3/4"	20	100	1000	



Lead Free uPVC Fittings in SCH-80 as per ASTM D2467



REDUCER BUSH

Size (Inch)	Size mm	Std.Pkd.	Qty./Box	M.R.P.
3/4"x1/2"	20x15	100	1000	
1"x1/2"	25x15	50	600	
1"x3/4"	25x20	50	600	
1.1/4"x1/2"	32x15	50	350	
1.1/4"x3/4"	32x20	50	350	
1.1/4"x1"	32x25	50	300	
1.1/2"x1/2"	40x15	35	245	
1.1/2"x3/4"	40x20	35	245	
1.1/2"x1"	40x25	35	245	
1.1/2"x1.1/4"	40x32	35	245	
2"x1/2"	50x15	20	140	
2"x3/4"	50x20	20	140	
2"x1"	50x25	20	140	
2"x1.1/4"	50x32	20	140	
2"x1.1/2"	50x40	20	140	



REDUCER COUPLER

Size (Inch)	Size mm	Std.Pkd.	Qty./Box	M.R.P.
3/4"x1/2"	20x15	70	420	
1"x1/2"	25x15	50	300	
1"x3/4"	25x20	40	240	
1.1/4"x1/2"	32x15	35	210	
1.1/4"x3/4"	32x20	30	210	
1.1/4"x1"	32x25	20	160	
1.1/2"x1/2"	40x15	24	168	
1.1/2"x3/4"	40x20	24	120	
1.1/2"x1"	40x25	24	144	
1.1/2"x1.1/4"	40x32	15	75	
2"x1/2"	50x15	24	120	
2"x3/4"	50x20	24	72	
2"x1"	50x25	24	120	
2"x1.1/4"	50x32	24	72	
2"x1.1/2"	50x40	24	72	
2.1/2"X2"	65X50	-	72	
3"X2"	80X50	-	72	
3"X2.1/2"	80X65	-	72	



REDUCER TEE

Size (Inch)	Size mm	Std.Pkd.	Qty./Box	M.R.P.
3/4"x1/2"	20x15	30	180	
1"x1/2"	25x15	20	140	
1"x3/4"	25x20	20	120	
1.1/4"x1/2"	32x15	10	70	
1.1/4"x3/4"	32x20	10	70	
1.1/4"x1"	32x25	10	70	
1.1/2"x1/2"	40x15	8	56	
1.1/2"x3/4"	40x20	10	60	
1.1/2"x1"	40x25	5	50	
1.1/2"x1.1/4"	40x32	5	45	
2"x1/2"	50x15	4	32	
2"x3/4"	50x20	4	32	
2"x1"	50x25	4	32	
2"x1.1/4"	50x32	4	32	
2"x1.1/2"	50x40	4	32	



METAL CLAMP

Size (Inch)	Size mm	Std.Pkd.	Qty./Box	M.R.P.
1/2"	21	100	1000	
3/4"	27	100	800	
1"	34	100	600	
1.1/4"	42	100	500	
1.1/2"	49	100	400	
2"	61	100	300	
2.1/2"	65	50	250	
3"	80	50	200	



NAIL CLAMP

Size (Inch)	Size mm	Std.Pkd.	Qty./Box	M.R.P.
1/2"	21	100	1000	
3/4"	27	100	800	
1"	34	100	600	
1.1/4"	42	100	500	
1.1/2"	49	100	400	
2"	61	100	300	



NON RETURN VALVE

Size (Inch)	Size mm	Qty./Box	M.R.P.
1/2"	15	15	
3/4"	20	10	
1"	25	6	

PRODUCT FEATURES:



Light Weight



Non Toxic



UV Resistant



Effective Cost



Lead Free



Easy to Install



Cold Water Suit.



Lead Free uPVC Fittings in SCH-80 as per ASTM D2467



CROSS TEE

Size (Inch)	Size mm	Std.Pkd.	Qty./Box	M.R.P.
1/2"	15	35	210	
3/4"	20	25	125	
1"	25	15	75	
1.1/4"	32			



REDUCER ELBOW

Size (Inch)	Size mm	Std.Pkd.	Qty./Box	M.R.P.
3/4"x1/2"	20x15	50	250	
1"x1/2"	25x15	25	200	
1"x3/4"	25x20	25	175	



THREAD ELBOW

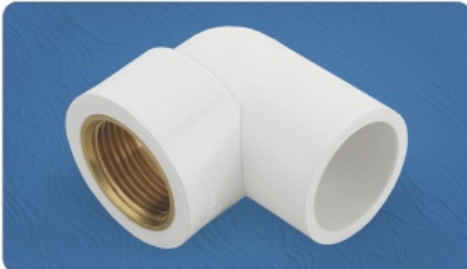
Size (Inch)	Size mm	Std.Pkd.	Qty./Box	M.R.P.
1/2"	15	60	480	
3/4"	20	40	280	
1"	25	25	150	



SOLVENT CEMENT

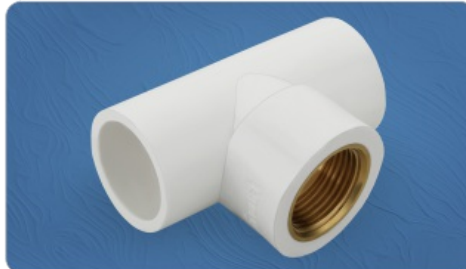
Size Ml. (Tin)	Inner Pack.	Master Pack.	M.R.P.
59 ml.	30	240	
118 ml.	24	144	
237 ml.	24	96	
473 ml.	12	72	
946 ml.	6	36	

Lead Free uPVC Fittings in S-40 as per ASTM D2467 (LIGHT WEIGHT)



BRASS ELBOW

Size (Inch)	Size mm	Std.Pkd.	Qty./Box	M.R.P.
1/2"	15	50	350	



BRASS TEE

Size (Inch)	Size mm	Std.Pkd.	Qty./Box	M.R.P.
1/2"	15	35	245	



BRASS F.T.A.

Size (Inch)	Size mm	Std.Pkd.	Qty./Box	M.R.P.
1/2"	15	50	500	
3/4" x 1/2"	20	50	400	



ELBOW

Size (Inch)	Size mm	Std.Pkd.	Qty./Box	M.R.P.
1/2"	15	60	480	
3/4"	20	40	280	
1"	25	25	150	



EQUAL TEE

Size (Inch)	Size mm	Std.Pkd.	Qty./Box	M.R.P.
1/2"	15	50	300	
3/4"	20	25	175	
1"	25	15	105	



END CAP

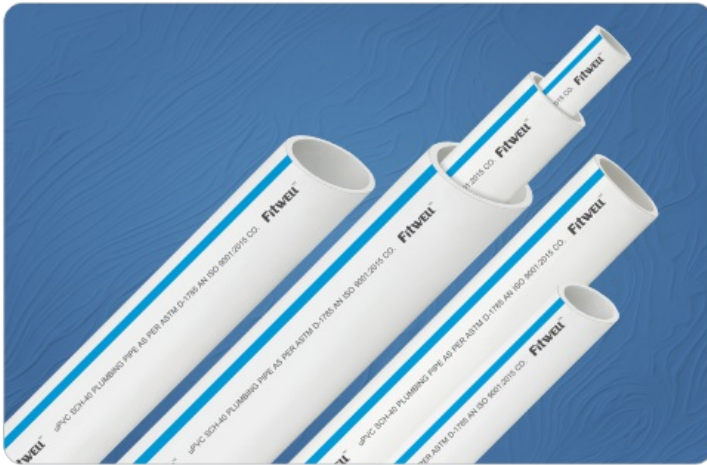
Size (Inch)	Size mm	Std.Pkd.	Qty./Box	M.R.P.
1/2"	15	50	1000	
1"	25	50	400	



COUPLER

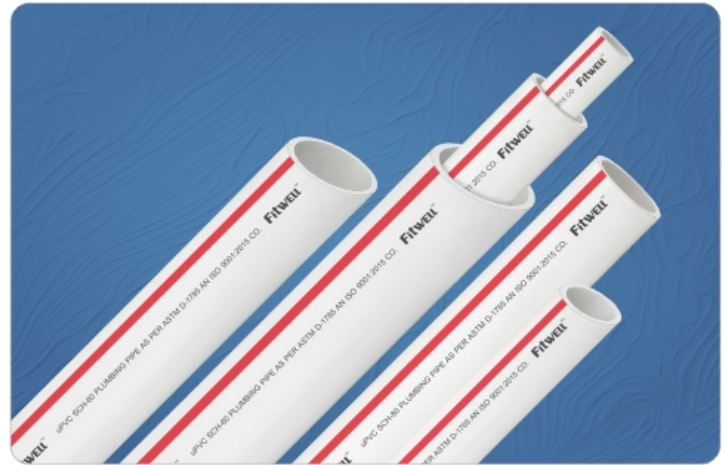
Size (Inch)	Size mm	Std.Pkd.	Qty./Box	M.R.P.
1/2"	15	100	600	
3/4"	20	60	420	
1"	25	30	210	

uPVC Pipes (SCH-40, SCH-80) ASTM D1785



uPVC SCH-40

Size (Inch)	Size mm	3Mtr. Pack	6Mtr. Pack	M.R.P. 3Mtr.	M.R.P. 6Mtr.
1/2"	15	50	25		
3/4"	20	40	20		
1"	25	25	15		
1.1/4"	32	15	10		
1.1/2"	40	15	10		
2"	50	10	5		
2.1/2"	65	5	3		
3"	80	4	3		



uPVC SCH-80

Size (Inch)	Size mm	3Mtr. Pack	6Mtr. Pack	M.R.P. 3Mtr.	M.R.P. 6Mtr.
1/2"	15	50	25		
3/4"	20	40	20		
1"	25	25	15		
1.1/4"	32	15	10		
1.1/2"	40	15	10		
2"	50	10	5		
2.1/2"	65	5	3		
3"	80	4	3		

STANDARDS

- ASTM D 1785 :** PVC Plastic Pipes, SCH-40 & SCH-80.
- ASTM D 2467 :** Socket Type PVC Plastic Fittings, SCH-80.
- ASTM D 2564 :** Solvent Cements for Plastic Pipes & Fittings.

Pressure Rating of uPVC Pipes (SCH-40 & SCH-80)

SIZE	Pipes Size in Inch	1/2"	3/4"	1"	1 1/4"	1 1/2"	2"	2 1/2"	3"
	Pipes Size in mm	15	20	25	32	40	50	65	80
SCH-40	Average Outer Diameter (mm)	21.34	26.67	33.40	42.16	48.26	60.32	73.02	88.90
	Min. Wall Thickness (mm)	2.77	2.87	3.38	3.56	3.68	3.91	5.16	5.49
	Max. Work Pressure Rating (kg./cm ²) at 23°C	42.19	33.75	31.64	26.01	23.20	19.69	21.09	18.28
	Burst Pressure (kg./cm ²)	131.70	106.20	99.30	81.40	73.10	61.40	66.90	57.90
SCH-80	Average Outer Diameter (mm)	21.34	26.67	33.40	42.16	48.26	60.32	73.02	88.90
	Min. Wall Thickness (mm)	3.73	3.91	4.55	4.85	5.08	5.54	7.01	7.62
	Max. Work Pressure Rating (kg./cm ²) at 23°C	59.76	48.51	44.29	36.56	33.04	28.12	29.53	26.01
	Burst Pressure (kg./cm ²)	187.60	151.70	139.30	114.50	104.10	88.90	93.80	82.70

INSTALLATION METHOD OF 'FITWELL' cPVC & uPVC PIPES & FITTINGS



Terms & Conditions :

- The above prices are Ex-Factory, Freight will be charged extra as applicable. • Taxes : GST will be Extra Charged. • Advance Payment.
- Payment should be deposited in our account against Perform a Invoice in terms & conditions of Perform a Invoice • Late payment interest will be charged @ 18% Flat.
- Supply will be made within 7-10 days after confirmation of Performa Invoice. • The Company reserves the right to revise the prices without any prior intimation.
- All Disputes are subject to Rajkot jurisdiction only.

One Stop for multiple plumbing solution under one roof



cPVC Pipes & Fittings | uPVC Pipes & Fittings | SWR Pipes & Fittings
Agriculture Pipes & Fittings | Service Saddle | MDPE Fittings | FRP Manhole Cover | PVC Faucet

Fitwell™

PIPING SYSTEMS

AN ISO 9001:2015 COMPANY



Dealer / Distributor :

Mfg. & Mktg. By :

FITWELL POLYTECHNIK PVT. LTD.

Gujarat - India.



मेक इन इंडिया



एक कदम स्वच्छता की ओर