

AN ISO 9001:2015 CERTIFIED COMPANY

# Fitwell™

## PIPING SYSTEMS

The Complete **Plumbing** Solution  
Under One Roof



cPVC Pipes & Fittings | uPVC Pipes & Fittings | SWR Pipes & Fittings  
Agriculture Pipes & Fittings | Service Saddle | MDPE Fittings | FRP Manhole Cover | PVC Faucet

**PRICE LIST**  
w.e.f. 1st Jul. 2024



## ABOUT Fitwell™ POLYTECHNIK Pvt. Ltd.

We are a group of 3 manufacturing company. The group slowly but steadily diversified and started the manufacturing of cPVC, uPVC, SWR, Agri Pipe & Fittings, CP Fittings, Brass Fittings & C.I, M.I, G.I Pipe Fittings, Forged Pipe Fittings. established its products successfully both in Indian & foreign markets.

Our group of company was established in 1998. We are one of the leading manufacturers of cPVC, uPVC, SWR, Agri Pipe & Fittings, CP Fittings, Brass Fittings & C.I, M.I, G.I Pipe Fittings, Brass Forged Pipe Fittings. The factory has the necessary facilities for casting & Injection molding according to international standard. Threading as per standard and up to date inspection of testing chemical and physical properties is undertaken. We are having a team of highly qualified and experienced engineers for quality maintenance & consistent research development efforts are made through rigid quality control tests.

**Fitwell™** Brand ISI pipe Fittings enjoy a good reputation for its quality and durability all over India & Abroad. It has the unique distinction of being sought after in Government departments, Municipal Corporations and oil & gas Plants. Our factory is equipped with the most up to date and sophisticated instruments for chemical and physical testing. The quality control is rigidly enforced through out the production process to ensure that the finished products are of the highest possible quality.

**Fitwell™** Brand ISI Pipe Fittings are dependable beyond doubt. These are also exported to various countries, On account of consistent Quality **Fitwell™** Brand ISI marked Pipe Fittings, Enjoy a great reputation in International Market With British International Organisation, Indian and American Standards.

Beautiful Design, Reliable Performance, Affordable Price.  
With **Fitwell™** You Get The Whole Package for Piping System.

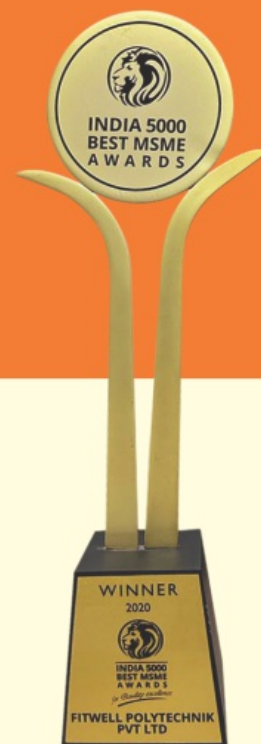
AN ISO 9001:2015 COMPANY



# WINNER-2020

## INDIA 5000 BEST MSME AWARDS

### FITWELL POLYTECHNIK PVT. LTD.



The Complete **Plumbing** solution

## cPVC PIPES & FITTINGS

### FOR HOT & COLD WATER

#### Application :

- Hot & Cold Water Plumbing.
- Corrosive Fluid Transportation.
- Chemical Fluid.
- Carrying Drinking Water.
- Residential Use.
- Industrial Use.

One Stop for multiple plumbing solution under one roof



#### PRODUCT FEATURES:



Corrosion Resistant



High Strength



UV Resistant



Effective Cost



Fire Resistant



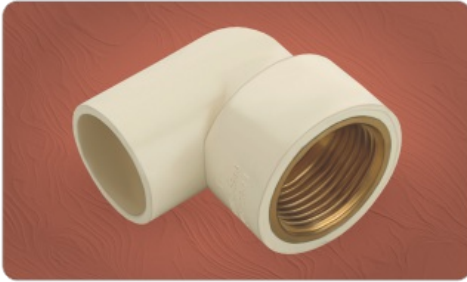
Easy to Install



Withstands temp. up to 93°C



## CPVC FITTINGS IN SDR-11 AS PER ASTM D2846



### BRASS ELBOW

| Size (Inch) | Size mm | Std.Pkd. | Qty./Box | M.R.P. |
|-------------|---------|----------|----------|--------|
| 1/2"        | 15      | 25       | 600      |        |
| 3/4"        | 20      | 25       | 250      |        |
| 1"          | 25      | 20       | 160      |        |
| 3/4"x1/2"   | 20x15   | 25       | 400      |        |
| 1"x1/2"     | 25x15   | 25       | 275      |        |
| 1"x3/4"     | 25x20   | 25       | 225      |        |



### BRASS M.T.A.

| Size (Inch) | Size mm | Std.Pkd. | Qty./Box | M.R.P. |
|-------------|---------|----------|----------|--------|
| 1/2"        | 15      | 25       | 250      |        |
| 3/4"        | 20      | 25       | 300      |        |
| 1"          | 25      | 10       | 200      |        |
| 1.1/4"      | 32      | 8        | 56       |        |
| 1.1/2"      | 40      | 6        | 48       |        |
| 2"          | 50      | 4        | 24       |        |
| 2.1/2"      | 65      | 25       | -        |        |
| 3"          | 80      | 25       | -        |        |
| 3/4"x1/2"   | 20x15   | 25       | 500      |        |
| 1"x1/2"     | 25x15   | 25       | 400      |        |
| 1"x3/4"     | 25x20   | 10       | 100      |        |



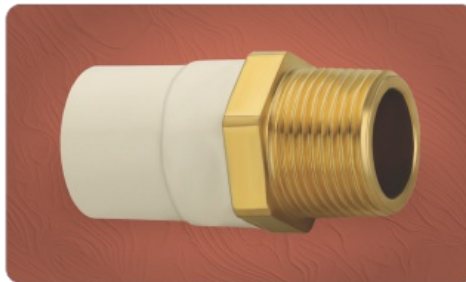
### BRASS F.T.A.

| Size (Inch) | Size mm | Std.Pkd. | Qty./Box | M.R.P. |
|-------------|---------|----------|----------|--------|
| 1/2"        | 15      | 25       | 300      |        |
| 3/4"        | 20      | 20       | 400      |        |
| 1"          | 25      | 10       | 200      |        |
| 1.1/4"      | 32      | 16       | 96       |        |
| 1.1/2"      | 40      | 6        | 48       |        |
| 2"          | 50      | 4        | 32       |        |
| 2.1/2"      | 65      | 25       | -        |        |
| 3"          | 80      | 25       | -        |        |
| 3/4"x1/2"   | 20x15   | 25       | 500      |        |
| 1"x1/2"     | 25x15   | 25       | 300      |        |
| 1"x3/4"     | 25x20   | 10       | 100      |        |



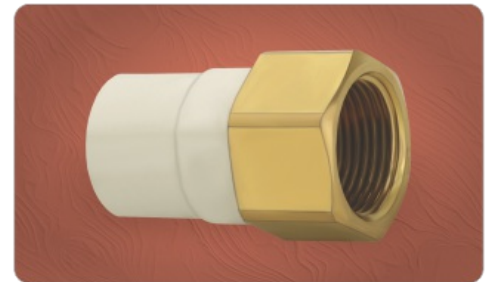
### BRASS TEE

| Size (Inch) | Size mm | Std.Pkd. | Qty./Box | M.R.P. |
|-------------|---------|----------|----------|--------|
| 1/2"        | 15      | 20       | 200      |        |
| 3/4"        | 20      | 35       | 245      |        |
| 1"          | 25      | 25       | 150      |        |
| 3/4"x1/2"   | 20x15   | 20       | 300      |        |
| 1"x1/2"     | 25x15   | 25       | 200      |        |
| 1"x3/4"     | 25x20   | 20       | 160      |        |



### BRASS MTA HEXAGON

| Size (Inch) | Size mm | Std.Pkd. | Qty./Box | M.R.P. |
|-------------|---------|----------|----------|--------|
| 3/4"        | 20      | 22       | 176      |        |
| 1"          | 25      | 13       | 78       |        |
| 1.1/4"      | 32      | 6        | 60       |        |
| 1.1/2"      | 40      | 4        | 32       |        |
| 2"          | 50      | 2        | 20       |        |
| 3/4"x1/2"   | 20x15   | 24       | 192      |        |
| 1"x1/2"     | 25x15   | 15       | 90       |        |
| 1"x3/4"     | 25x20   | 15       | 90       |        |



### BRASS FTA HEXAGON

| Size (Inch) | Size mm | Std.Pkd. | Qty./Box | M.R.P. |
|-------------|---------|----------|----------|--------|
| 3/4"        | 20      | 20       | 160      |        |
| 1"          | 25      | 11       | 66       |        |
| 1.1/4"      | 32      | 6        | 60       |        |
| 1.1/2"      | 40      | 4        | 32       |        |
| 2"          | 50      | 2        | 20       |        |
| 3/4"x1/2"   | 20x15   | 20       | 200      |        |
| 1"x1/2"     | 25x15   | 14       | 84       |        |
| 1"x3/4"     | 25x20   | 14       | 84       |        |



### BRASS MALE ELBOW

| Size (Inch) | Size mm | Std.Pkd. | Qty./Box | M.R.P. |
|-------------|---------|----------|----------|--------|
| 3/4" x 1/2" | 20x15   | 25       | 250      |        |
| 1" x 1/2"   | 25x15   | 25       | 175      |        |



### ELBOW

| Size (Inch) | Size mm | Std.Pkd. | Qty./Box | M.R.P. |
|-------------|---------|----------|----------|--------|
| 1/2"        | 15      | 100      | 1200     |        |
| 3/4"        | 20      | 100      | 500      |        |
| 1"          | 25      | 50       | 250      |        |
| 1.1/4"      | 32      | 30       | 150      |        |
| 1.1/2"      | 40      | 10       | 90       |        |
| 2"          | 50      | 8        | 40       |        |
| 2.1/2"      | 65      | 22       | -        |        |
| 3"          | 80      | 15       | -        |        |



### EQUAL TEE

| Size (Inch) | Size mm | Std.Pkd. | Qty./Box | M.R.P. |
|-------------|---------|----------|----------|--------|
| 1/2"        | 15      | 50       | 800      |        |
| 3/4"        | 20      | 50       | 350      |        |
| 1"          | 25      | 20       | 180      |        |
| 1.1/4"      | 32      | 20       | 100      |        |
| 1.1/2"      | 40      | 10       | 70       |        |
| 2"          | 50      | 4        | 32       |        |
| 2.1/2"      | 65      | 19       | -        |        |
| 3"          | 80      | 10       | -        |        |

## CPVC FITTINGS IN SDR-11 AS PER ASTM D2846



**COUPLER**

| Size (Inch) | Size mm | Std.Pkd. | Qty./Box | M.R.P. |
|-------------|---------|----------|----------|--------|
| 1/2"        | 15      | 100      | 2000     |        |
| 3/4"        | 20      | 100      | 800      |        |
| 1"          | 25      | 50       | 400      |        |
| 1.1/4"      | 32      | 50       | 200      |        |
| 1.1/2"      | 40      | 20       | 160      |        |
| 2"          | 50      | 15       | 75       |        |
| 2.1/2"      | 65      | 20       | -        |        |
| 3"          | 80      | 27       | -        |        |



**M.T.A.**

| Size (Inch) | Size mm | Std.Pkd. | Qty./Box | M.R.P. |
|-------------|---------|----------|----------|--------|
| 1/2"        | 15      | 100      | 800      |        |
| 3/4"        | 20      | 100      | 800      |        |
| 1"          | 25      | 50       | 400      |        |
| 1.1/4"      | 32      | 25       | 250      |        |
| 1.1/2"      | 40      | 20       | 160      |        |
| 2"          | 50      | 15       | 75       |        |
| 2.1/2"      | 65      | 48       | -        |        |
| 3"          | 80      | 36       | -        |        |
| 3/4"x1/2"   | 20x15   | 150      | 1050     |        |



**F.T.A.**

| Size (Inch) | Size mm | Std.Pkd. | Qty./Box | M.R.P. |
|-------------|---------|----------|----------|--------|
| 1/2"        | 15      | 100      | 700      |        |
| 3/4"        | 20      | 100      | 600      |        |
| 1"          | 25      | 50       | 350      |        |
| 1.1/4"      | 32      | 25       | 200      |        |
| 1.1/2"      | 40      | 20       | 120      |        |
| 2"          | 50      | 15       | 60       |        |
| 2.1/2"      | 65      | 48       | -        |        |
| 3"          | 80      | 36       | -        |        |
| 3/4"x1/2"   | 20x15   | 100      | 800      |        |



**UNION**

| Size (Inch) | Size mm | Std.Pkd. | Qty./Box | M.R.P. |
|-------------|---------|----------|----------|--------|
| 1/2"        | 15      | 25       | 300      |        |
| 3/4"        | 20      | 25       | 300      |        |
| 1"          | 25      | 20       | 180      |        |
| 1.1/4"      | 32      | 15       | 120      |        |
| 1.1/2"      | 40      | 15       | 75       |        |
| 2"          | 50      | 8        | 32       |        |



**SOCKET TANK NIPPLE**

| Size (Inch) | Size mm | Std.Pkd. | Qty./Box | M.R.P. |
|-------------|---------|----------|----------|--------|
| 3/4"        | 20      | 40       | 280      |        |
| 1"          | 25      | 25       | 200      |        |
| 1.1/4"      | 32      | 25       | 125      |        |
| 1.1/2"      | 40      | 20       | 80       |        |
| 2"          | 50      | 10       | 50       |        |



**TANK CONT.**

| Size (Inch) | Size mm | Std.Pkd. | Qty./Box | M.R.P. |
|-------------|---------|----------|----------|--------|
| 1/2"        | 15      | 25       | 300      |        |
| 3/4"        | 20      | 25       | 275      |        |
| 1"          | 25      | 20       | 160      |        |
| 1.1/4"      | 32      | 15       | 90       |        |
| 1.1/2"      | 40      | 12       | 72       |        |
| 2"          | 50      | 6        | 48       |        |



**ELBOW 45°**

| Size (Inch) | Size mm | Std.Pkd. | Qty./Box | M.R.P. |
|-------------|---------|----------|----------|--------|
| 1/2"        | 15      | 100      | 1600     |        |
| 3/4"        | 20      | 100      | 700      |        |
| 1"          | 25      | 50       | 300      |        |
| 1.1/4"      | 32      | 20       | 180      |        |
| 1.1/2"      | 40      | 20       | 120      |        |
| 2"          | 50      | 10       | 50       |        |



**END CAP**

| Size (Inch) | Size mm | Std.Pkd. | Qty./Box | M.R.P. |
|-------------|---------|----------|----------|--------|
| 1/2"        | 15      | 100      | 3200     |        |
| 3/4"        | 20      | 100      | 1500     |        |
| 1"          | 25      | 100      | 700      |        |
| 1.1/4"      | 32      | 50       | 400      |        |
| 1.1/2"      | 40      | 25       | 250      |        |
| 2"          | 50      | 20       | 120      |        |



**STEPOVER BEND**

| Size (Inch) | Size mm | Std.Pkd. | Qty./Box | M.R.P. |
|-------------|---------|----------|----------|--------|
| 3/4"        | 20      | 25       | 175      |        |
| 1"          | 25      | 20       | 100      |        |
| 1.1/4"      | 32      | 10       | 60       |        |

## CPVC FITTINGS IN SDR-11 AS PER ASTM D2846



### REDUCER BUSH

| Size (Inch)   | Size mm | Std.Pkd. | Qty./Box | M.R.P. |
|---------------|---------|----------|----------|--------|
| 3/4"x1/2"     | 20x15   | 100      | 1000     |        |
| 1"x1/2"       | 25x15   | 100      | 1000     |        |
| 1"x3/4"       | 25x20   | 100      | 1000     |        |
| 1.1/4"x3/4"   | 32x20   | 60       | 540      |        |
| 1.1/4"x1"     | 32x25   | 60       | 540      |        |
| 1.1/2"x3/4"   | 40x20   | 50       | 350      |        |
| 1.1/2"x1"     | 40x25   | 50       | 350      |        |
| 1.1/2"x1.1/4" | 40x32   | 50       | 350      |        |
| 2"x3/4"       | 50x20   | 20       | 180      |        |
| 2"x1"         | 50x25   | 20       | 180      |        |
| 2"x1.1/4"     | 50x32   | 20       | 180      |        |
| 2"x1.1/2"     | 50x40   | 20       | 180      |        |



### REDUCER COUPLER

| Size (Inch)   | Size mm | Std.Pkd. | Qty./Box | M.R.P. |
|---------------|---------|----------|----------|--------|
| 3/4"x1/2"     | 20x15   | 100      | 1000     |        |
| 1"x1/2"       | 25x15   | 100      | 700      |        |
| 1"x3/4"       | 25x20   | 100      | 500      |        |
| 1.1/4"x3/4"   | 32x20   | 50       | 300      |        |
| 1.1/4"x1"     | 32x25   | 40       | 280      |        |
| 1.1/2"x3/4"   | 40x20   | 25       | 225      |        |
| 1.1/2"x1"     | 40x25   | 20       | 200      |        |
| 1.1/2"x1.1/4" | 40x32   | 20       | 180      |        |
| 2"x3/4"       | 50x20   | 15       | 90       |        |
| 2"x1"         | 50x25   | 15       | 75       |        |
| 2"x1.1/4"     | 50x32   | 15       | 90       |        |
| 2"x1.1/2"     | 50x40   | 15       | 90       |        |



### REDUCER TEE

| Size (Inch)   | Size mm | Std.Pkd. | Qty./Box | M.R.P. |
|---------------|---------|----------|----------|--------|
| 3/4"x1/2"     | 20x15   | 20       | 200      |        |
| 1"x1/2"       | 25x15   | 20       | 200      |        |
| 1"x3/4"       | 25x20   | 20       | 200      |        |
| 1.1/4"x3/4"   | 32x20   | 20       | 140      |        |
| 1.1/4"x1"     | 32x25   | 20       | 120      |        |
| 1.1/2"x3/4"   | 40x20   | 10       | 70       |        |
| 1.1/2"x1"     | 40x25   | 10       | 60       |        |
| 1.1/2"x1.1/4" | 40x32   | 10       | 60       |        |
| 2"x3/4"       | 50x20   | 10       | 70       |        |
| 2"x1"         | 50x25   | 10       | 40       |        |
| 2"x1.1/4"     | 50x32   | 5        | 40       |        |
| 2"x1.1/2"     | 50x40   | 5        | 40       |        |



### LONG BEND

| Size (Inch) | Size mm | Std.Pkd. | Qty./Box | M.R.P. |
|-------------|---------|----------|----------|--------|
| 1/2"        | 15      | 20       | 220      |        |
| 3/4"        | 20      | 25       | 175      |        |
| 1"          | 25      | 20       | 100      |        |
| 1.1/4"      | 32      | 8        | 48       |        |
| 1.1/2"      | 40      | 5        | 30       |        |
| 2"          | 50      | 3        | 6        |        |



### METAL CLAMP

| Size (Inch) | Size mm | Std.Pkd. | Qty./Box | M.R.P. |
|-------------|---------|----------|----------|--------|
| 1/2"        | 16      | 100      | 1200     |        |
| 3/4"        | 22      | 100      | 1000     |        |
| 1"          | 29      | 100      | 700      |        |
| 1.1/4"      | 35      | 100      | 600      |        |
| 1.1/2"      | 41      | 100      | 500      |        |
| 2"          | 50      | 100      | 400      |        |



### NAIL CLAMP

| Size (Inch) | Size mm | Std.Pkd. | Qty./Box | M.R.P. |
|-------------|---------|----------|----------|--------|
| 1/2"        | 16      | 100      | 1200     |        |
| 3/4"        | 22      | 100      | 1000     |        |
| 1"          | 29      | 100      | 700      |        |
| 1.1/4"      | 35      | 100      | 600      |        |
| 1.1/2"      | 41      | 100      | 500      |        |
| 2"          | 50      | 100      | 400      |        |



### TRANSITION BUSH

| Size (Inch) | Size mm | Std.Pkd. | Qty./Box | M.R.P. |
|-------------|---------|----------|----------|--------|
| 3/4" x 3/4" | 20 x 20 | 100      | 1300     |        |
| 1" x 3/4"   | 25 x 20 | 100      | 1200     |        |
| 1" x 1"     | 25 x 25 | 100      | 1200     |        |



### MIXER ADAPTOR ALL IN ONE 5" & 6"

| Size (Inch) | Size mm | Std.Pkd. | Qty./Box | M.R.P. |
|-------------|---------|----------|----------|--------|
| 3/4"x1/2"   | 20x15   | 1        | 32       |        |



### SINK MIXER ADAPTOR ALL IN ONE

| Size (Inch) | Size mm | Std.Pkd. | Qty./Box | M.R.P. |
|-------------|---------|----------|----------|--------|
| 3/4"x1/2"   | 20x15   | 3        | 96       |        |



## CPVC FITTINGS IN SDR-11 AS PER ASTM D2846



### NON RETURN VALVE

| Size (Inch) | Size mm | Qty./Box | M.R.P. |
|-------------|---------|----------|--------|
| 3/4"        | 20      | 15       |        |
| 1"          | 25      | 10       |        |
| 1.1/4"      | 32      | 6        |        |



### REDUCER ELBOW

| Size (Inch) | Size mm | Std.Pkd. | Qty./Box | M.R.P. |
|-------------|---------|----------|----------|--------|
| 3/4"x1/2"   | 20x15   | 100      | 800      |        |
| 1"x1/2"     | 25x15   | 50       | 400      |        |
| 1"x3/4"     | 25x20   | 50       | 300      |        |



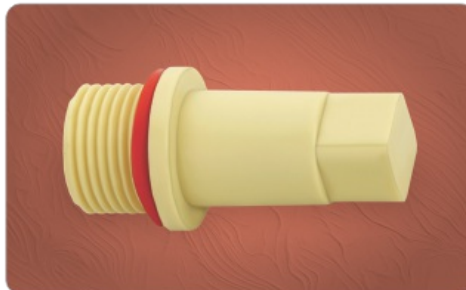
### THREAD ELBOW

| Size (Inch) | Size mm | Std.Pkd. | Qty./Box | M.R.P. |
|-------------|---------|----------|----------|--------|
| 3/4" x 1/2" | 20x15   | 100      | 500      |        |



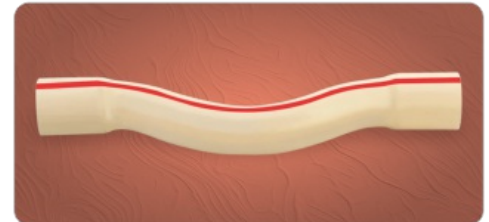
### CROSS TEE

| Size (Inch) | Size mm | Std.Pkd. | Qty./Box | M.R.P. |
|-------------|---------|----------|----------|--------|
| 1/2"        | 15      | 50       | 300      |        |
| 3/4"        | 20      | 50       | 300      |        |
| 1"          | 25      | 25       | 125      |        |
| 1.1/4"      | 32      | 15       | 90       |        |



### END PLUG

| Size (Inch) | Size mm | Std.Pkd. | Qty./Box | M.R.P. |
|-------------|---------|----------|----------|--------|
| 1/2"        | 15      | 100      | 800      |        |
| 3/4"        | 20      | 100      | 1000     |        |



### STEP OVER BEND (FEB.)

| Size (Inch) | Size mm | Std.Pkd. | Qty./Box | M.R.P. |
|-------------|---------|----------|----------|--------|
| 1/2"        | 15      | 20       | 220      |        |
| 3/4"        | 20      | 25       | 175      |        |
| 1"          | 25      | 20       | 100      |        |
| 1.1/4"      | 32      | 8        | 48       |        |
| 1.1/2"      | 40      | 5        | 30       |        |
| 2"          | 50      | 3        | 6        |        |



### SOLVENT CEMENT

| Size Ml. (Tin) | Inner Pack. | Master Pack. | M.R.P. |
|----------------|-------------|--------------|--------|
| 59 ml.         | 30          | 240          |        |
| 118 ml.        | 24          | 144          |        |
| 237 ml.        | 24          | 96           |        |
| 473 ml.        | 12          | 72           |        |
| 946 ml.        | 6           | 36           |        |



### PRODUCT FEATURES:



Corrosion Resistant



High Strength



UV Resistant



Effective Cost



Fire Resistant



Easy to Install



Withstands temp. up to 93°C

**CPVC PIPES IN SDR-11 & 13.5 AS PER ASTM D2846 IN CTS (COPPER TUBE SIZE)**



**cPVC SDR-11**

| Size (Inch) | Size mm | 3Mtr. Pack | 5Mtr. Pack | M.R.P. 3Mtr. | M.R.P. 5Mtr. |
|-------------|---------|------------|------------|--------------|--------------|
| 1/2"        | 15      | 50         | 50         |              |              |
| 3/4"        | 20      | 50         | 30         |              |              |
| 1"          | 25      | 30         | 20         |              |              |
| 1.1/4"      | 32      | 20         | 10         |              |              |
| 1.1/2"      | 40      | 15         | 10         |              |              |
| 2"          | 50      | 10         | 5          |              |              |
| 2.1/2"      | 65      | 6          | 6          |              |              |
| 3"          | 80      | 5          | 5          |              |              |

**cPVC SDR-13.5**

| Size (Inch) | Size mm | 3Mtr. Pack | 5Mtr. Pack | M.R.P. 3Mtr. | M.R.P. 5Mtr. |
|-------------|---------|------------|------------|--------------|--------------|
| 1/2"        | 15      | 50         | 50         |              |              |
| 3/4"        | 20      | 50         | 30         |              |              |
| 1"          | 25      | 30         | 20         |              |              |
| 1.1/4"      | 32      | 20         | 10         |              |              |
| 1.1/2"      | 40      | 15         | 10         |              |              |
| 2"          | 50      | 10         | 5          |              |              |
| 2.1/2"      | 65      | 6          | 6          |              |              |
| 3"          | 80      | 5          | 5          |              |              |

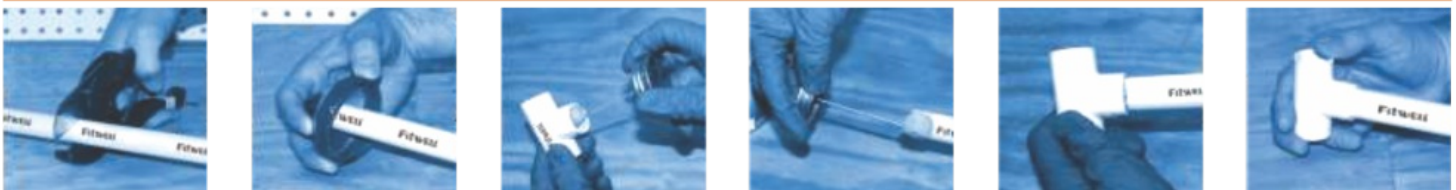
**STANDARDS**

- ASTM D 1784 :** Specification for Rigid cPVC Compounds
- ASTM D 2846 :** Specification for Rigid cPVC Plastic & Fittings for Hot & Cold Water Distribution
- ASTM F 493 :** Specification for Solvent Cement for cPVC Plastic Pipes & Fittings

**Pressure Rating of cPVC Pipes (SDR-11 & SDR-13.5)**

| SIZE                | Pipes Size in Inch                             | 1/2"  | 3/4"  | 1"    | 1 1/4" | 1 1/2" | 2"    |
|---------------------|--|-------|-------|-------|--------|--------|-------|
|                     | Pipes Size in mm                               | 15    | 20    | 25    | 32     | 40     | 50    |
| CLASS 2<br>SDR-13.5 | Average Outer Diameter (mm)                    | 15.90 | 22.20 | 28.60 | 34.90  | 41.30  | 54.00 |
|                     | Min. Wall Thickness (mm)                       | 1.40  | 1.65  | 2.12  | 2.59   | 3.06   | 4.00  |
|                     | Pressure Rating (kg./cm <sup>2</sup> ) of 23°C | 22.50 | 22.50 | 22.50 | 22.50  | 22.50  | 22.50 |
|                     | Pressure Rating (kg./cm <sup>2</sup> ) of 82°C | 5.60  | 5.60  | 5.60  | 5.60   | 5.60   | 5.60  |
| CLASS 1<br>SDR-11   | Average Outer Diameter (mm)                    | 15.90 | 22.20 | 28.60 | 34.60  | 41.30  | 54.00 |
|                     | Min. Wall Thickness (mm)                       | 1.73  | 2.03  | 2.59  | 3.18   | 3.76   | 4.90  |
|                     | Pressure Rating (kg./cm <sup>2</sup> ) of 23°C | 28.10 | 28.10 | 28.10 | 28.10  | 28.10  | 28.10 |
|                     | Pressure Rating (kg./cm <sup>2</sup> ) of 82°C | 7.00  | 7.00  | 7.00  | 7.00   | 7.00   | 7.00  |

**INSTALLATION METHOD OF 'FITWELL' cPVC & uPVC PIPES & FITTINGS**



**Terms & Conditions :**

- The above prices are Ex-Factory, Freight will be charged extra as applicable. • Taxes : GST will be Extra Charged. • Advance Payment.
- Payment should be deposited in our account against Perform a Invoice in terms & conditions of Perform a Invoice • Late payment interest will be charged @ 18% Flat.
- Supply will be made within 7-10 days after confirmation of Performa Invoice. • The Company reserves the right to revise the prices without any prior intimation.
- All Disputes are subject to Rajkot Jurisdiction only.



One Stop for multiple plumbing solution under one roof



cPVC Pipes & Fittings | uPVC Pipes & Fittings | SWR Pipes & Fittings  
Agriculture Pipes & Fittings | Service Saddle | MDPE Fittings | FRP Manhole Cover | PVC Faucet

# Fitwell™

## PIPING SYSTEMS

AN ISO 9001:2015 COMPANY



Dealer / Distributor :

Mfg. & Mktg. By :  
**FITWELL POLYTECHNIK PVT. LTD.**  
Gujarat - India.



मेक इन इंडिया



एक कदम स्वच्छता की ओर